

quattro middle east



# CONTENTS

● ABOUT US	04
● THE STRUCTURE	07
● HEADQUARTERS	08
● MATERIALS & QUALITY	09
● CERTIFICATION	10
● WHAT WE DO?	11
● SERVICES	12
● RESEARCH & DEVELOPMENT PROCESS	13
● Portfolio	
○ Retail	15
○ Residential	41
○ Hospitality	55
○ General Contractor	77

## ABOUT US

Quattro Middle East is the most recent addition to Essequattro s.p.a.

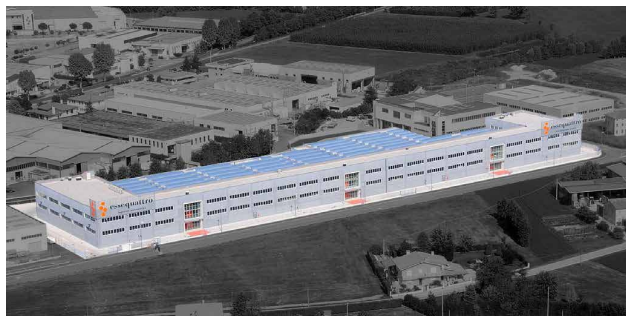
The office in Abu Dhabi coordinates contract projects for the luxury market in Arab countries, working in close contact with architects, interior designers and international companies.

The company has important, sophisticated and highly demanding customers: international fashion stores and boutiques, luxury hotels, resorts and residences which have been built on the basis of exclusive projects.

## OUR BRANDS



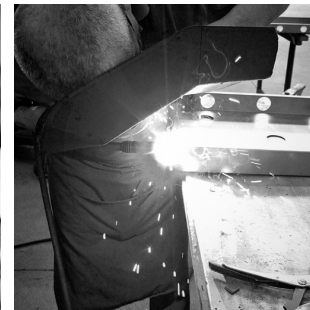
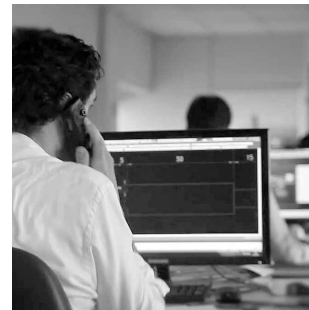
## ABOUT ESSEQUATTRO



Essequattro is a General Contractor that operates worldwide and that has been in business since 1980 with its headquarter in Italy.

Its factories produce bespoke furniture, metalwork and curtain walls.

## THE STRUCTURE



With two plants spread over approximately 30,000 sqm, equipped with automated processes and complemented by strong craftsmanship experience and skills, Essequattro has a team of 200 employees and an external network of over 50 professionals to support the client in the design phase and prepared to manage and develop construction drawings, and meet any special design needs.





## HEADQUARTERS

The main Essequattro headquarters is in Italy in the province of Vicenza.

There is also a presence in Shanghai which is aimed at providing the same services within the Asia Pacific area. There is also an office in New York and an other in Abu Dhabi which offer efficient technical services to these markets too.



## MATERIALS & QUALITY



The products offered by Essequattro are always designed ad hoc for the individual customer: careful choice of the materials and processing by experts ensures every product is unique.

The Essequattro headquarter office has a showroom of over 10.000 samples of carefully selected materials and designer products, where special finishes may be chosen and customized solutions sought with the assistance of a highly skilled staff.



# CERTIFICATION



Essequattro has been awarded the certifications:

- **SOA**  
Qualificazione per l'esecuzione di lavori pubblici
- **UNI EN ISO 9001:2008**  
Sistema di gestione qualità
- **UNI EN ISO 14001:2004**  
Sistema di gestione per l'ambiente
- **OHSAS 18001:2007**  
Sistema di gestione sicurezza lavoro
- **EN 14351-1:2006 + A1:2010**  
Sistema sac 1 per porte pedonali antipanico Aluk
- **EN 14351-1:2006 + A1:2010**  
Sistema sac 1 per porte pedonali antipanico Schüco
- **UNI EN ISO 1090-1:2009**  
Componenti strutturali per strutture in acciaio
- **UNI EN ISO 3834-2:2006**  
Saldatura per fusione di strutture in genere
- **FSC**  
certifica che il legno proveniente da foreste gestite correttamente dal punto di vista ambientale
- **PEFC**  
programma di riconoscimento degli schemi di certificazione forestale nazionali

# WHAT WE DO?



## GENERAL CONTRACTOR

Essequattro offers the most complete range of services, from the first phase of design to the opening of the structure. It is able to manage, all over the world, turnkey installations and guarantee supervision at all phases and for all tasks of the project, coordinating various companies, and assuming all responsibility for the job.



## INTERIORS

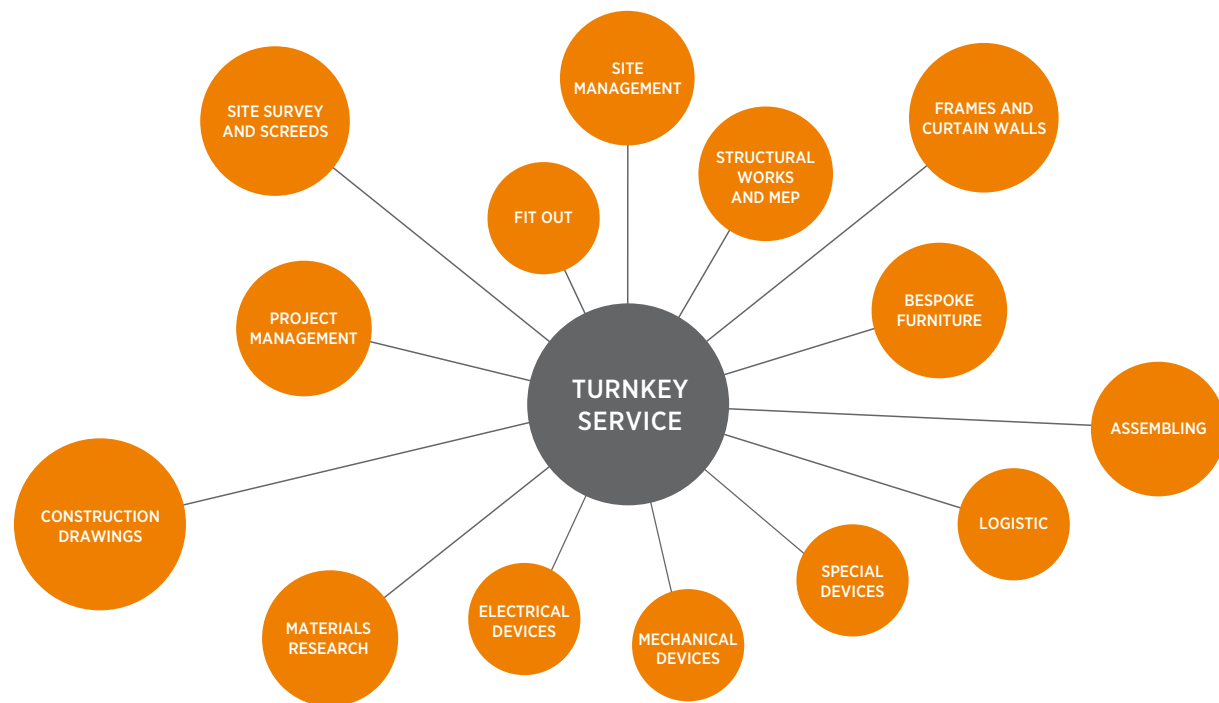
Each furnishing produced by Essequattro is characterized by its quest for uncompromising quality. Shops, boutiques as well as hotels, luxury private residences offices and banks... be spoke furnishings that ensure more than just aesthetic value, but also maximum durability, functionality and reliability.



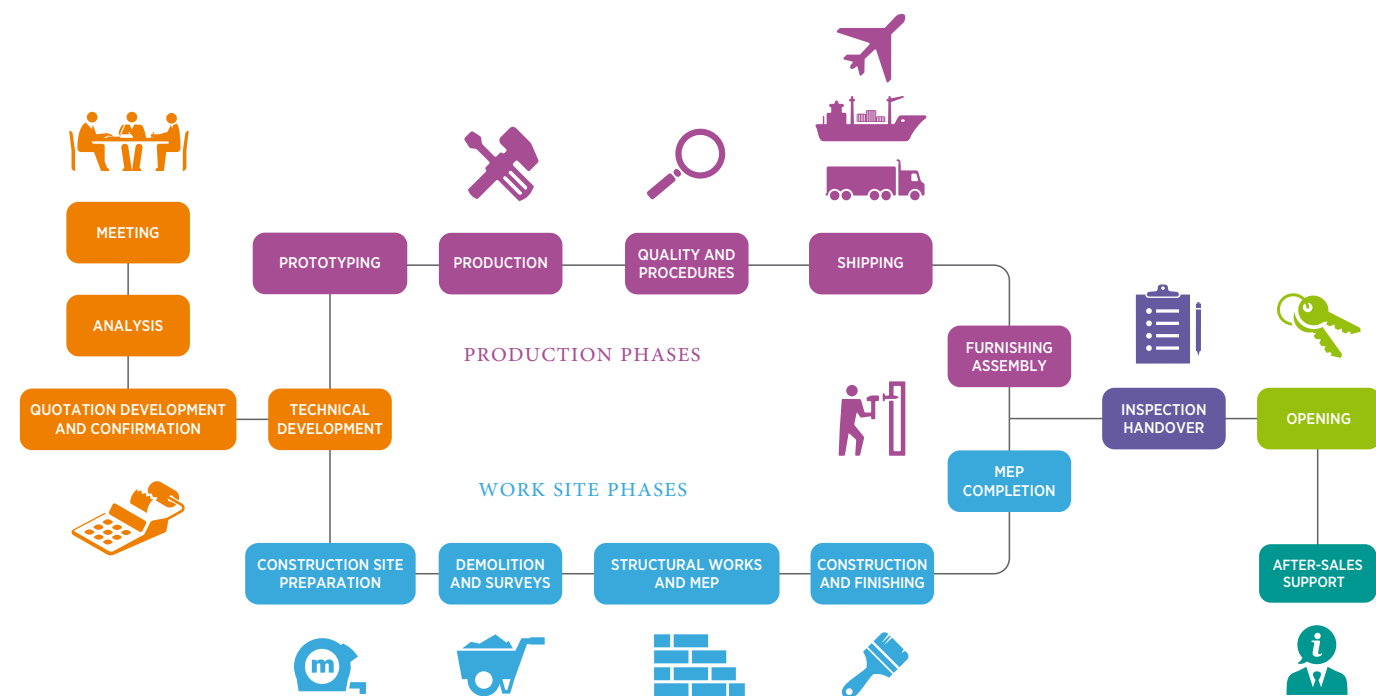
## FRAMES AND CURTAIN WALLS

The character, strength and feeling of a building emerge from its skin, an architectural element connecting interior and exterior: doors and windows, curtain walling and cladding. The excellence of Essequattro is also expressed in the design and manufacture of architectural aluminium housings in metal and glass.

# SERVICES



# RESEARCH & DEVELOPMENT PROCESS



quattro middle east



RETAIL





PROJECT

# MOHAMMED RASOOL KHOORY & SONS

DESIGN

Quattro / Essequattro

LOCATION

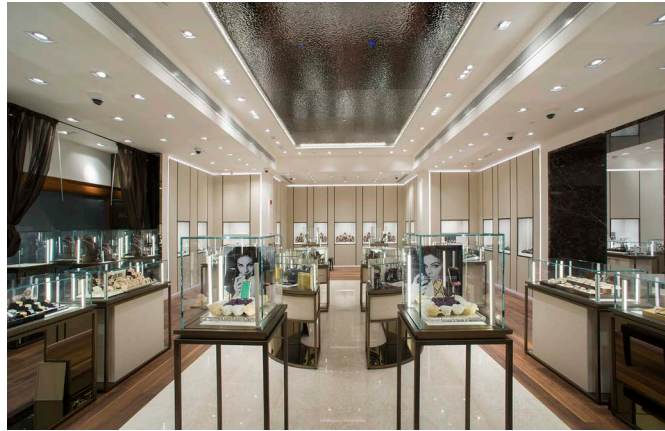
WORLD TRADE CENTER - ABU DHABI



M. R. KHOORY & SONS | WORLD TRADE CENTER - ABU DHABI









PROJECT

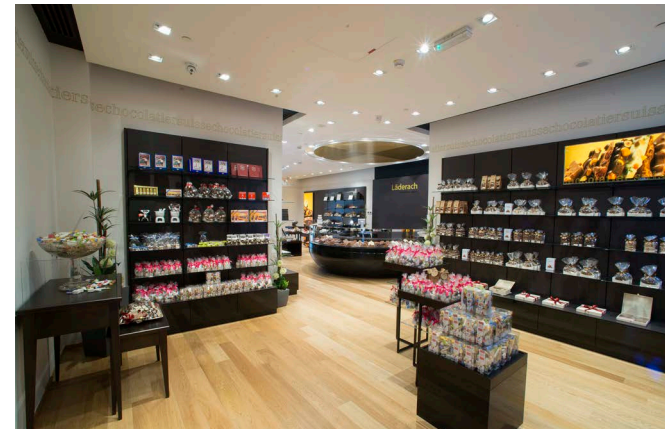
Läderach

DESIGN

Quattro / Essequattro

LOCATION

WORLD TRADE CENTER - ABU DHABI



PROJECT

Läderach

DESIGN

Quattro

LOCATION

YAS MALL - ABU DHABI





PROJECT

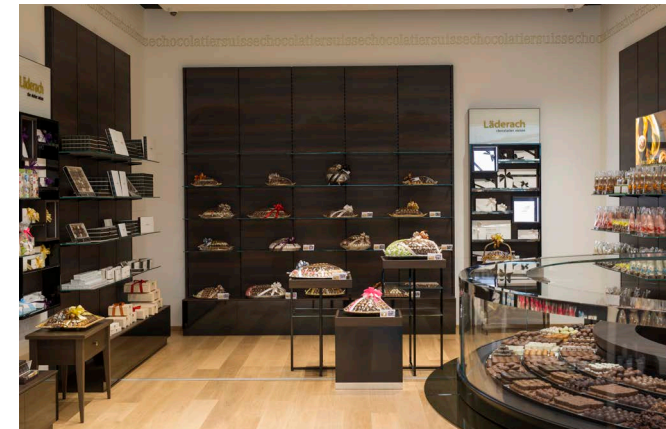
Läderach

DESIGN

Quattro

LOCATION

AL AIN MALL - ABU DHABI



PROJECT

# CHRISTIAN DIOR

DESIGN

LOCATION

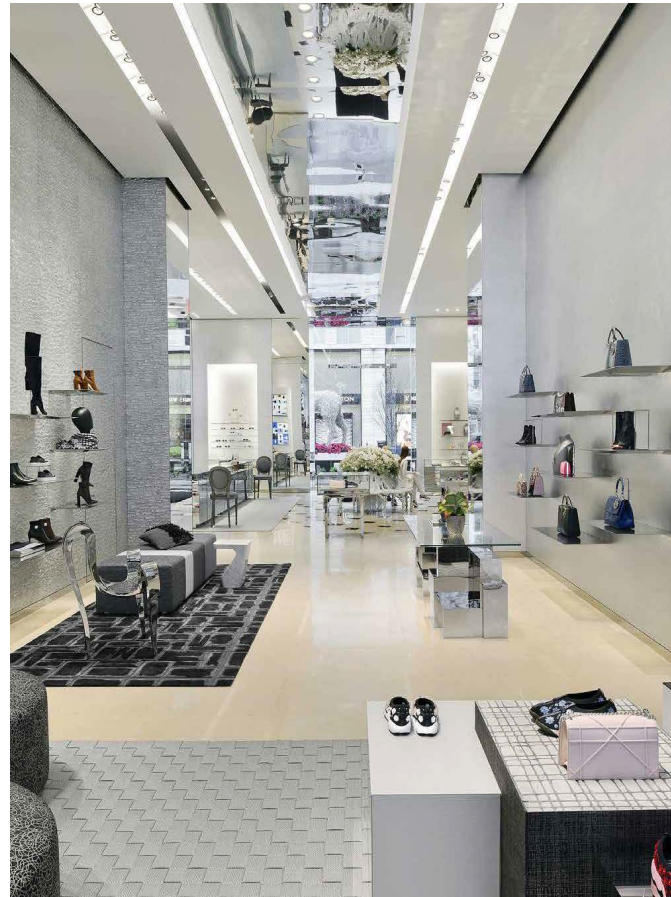
WASHINGTON



CHRISTIAN DIOR | WASHINGTON









PROJECT

GIVENCHY

DESIGN

LOCATION

MALL OF THE EMIRATES - DUBAI





PROJECT

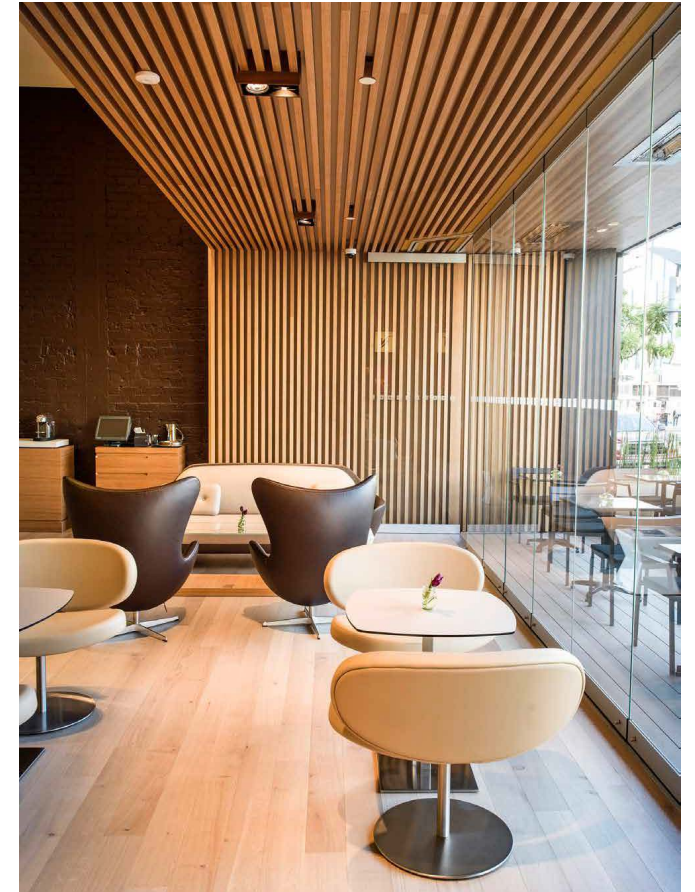
# NESPRESSO

DESIGN

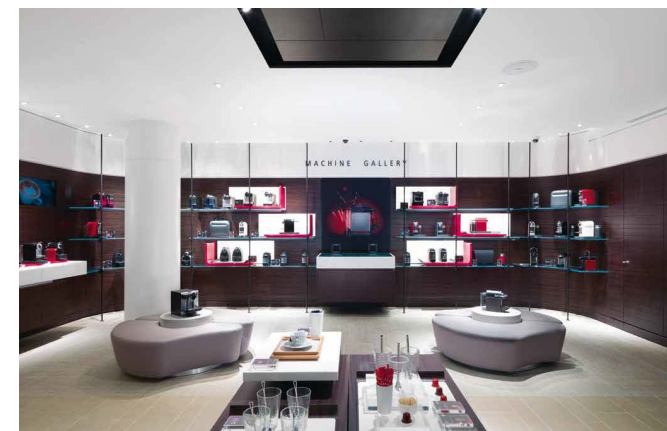
Parisotto e Formenton

LOCATION

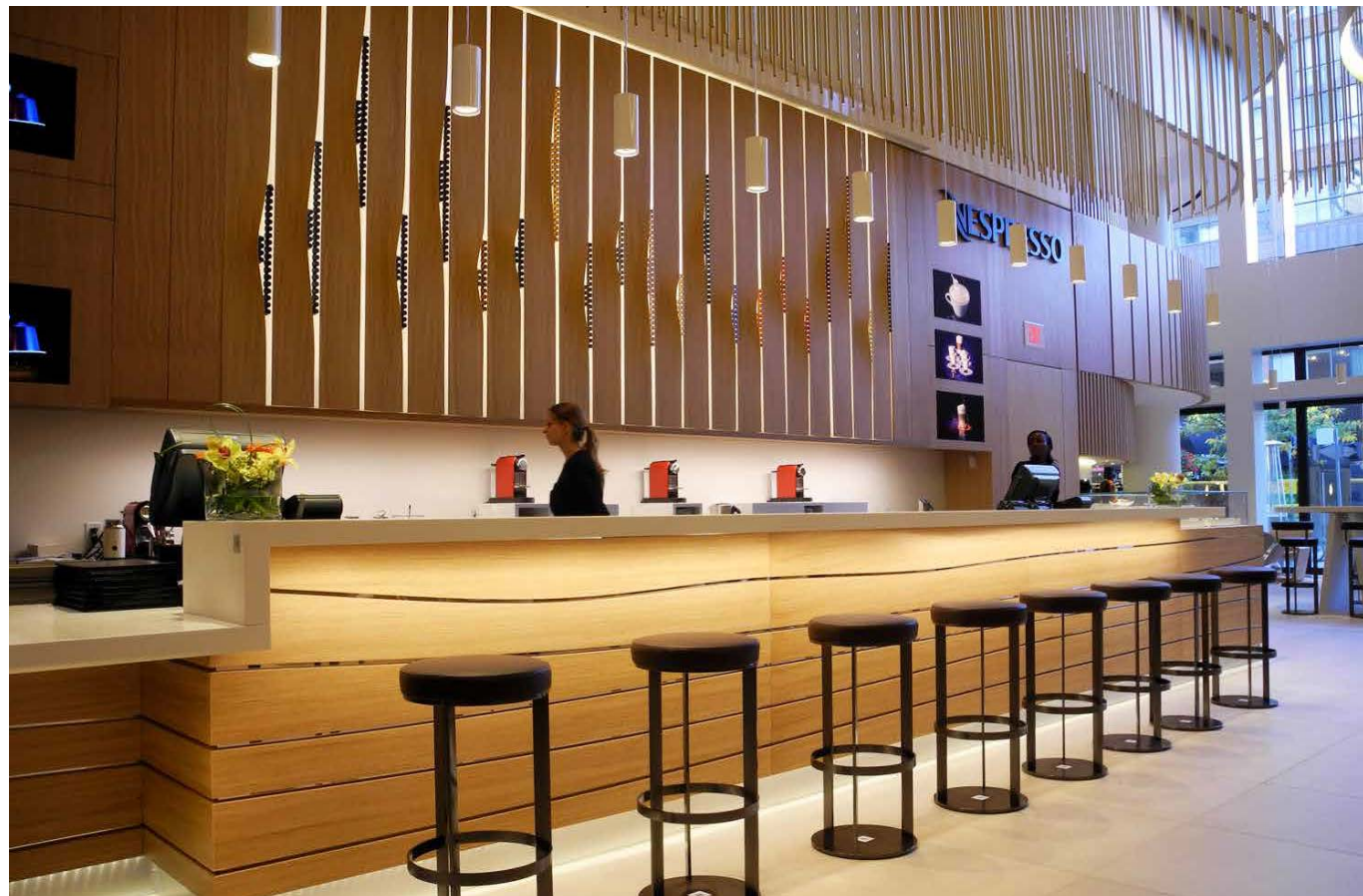
Aarhus / Aventura / Beverly Hills / Dallas  
/ Firenze Lyon / London / Lucerna /  
Malmo / Manchester / Marsiglia / New  
Port Beach / Ottawa / Palo Alto / Roma  
/ San Francisco / Scottsdale (Phoenix) /  
Toronto / Versailles



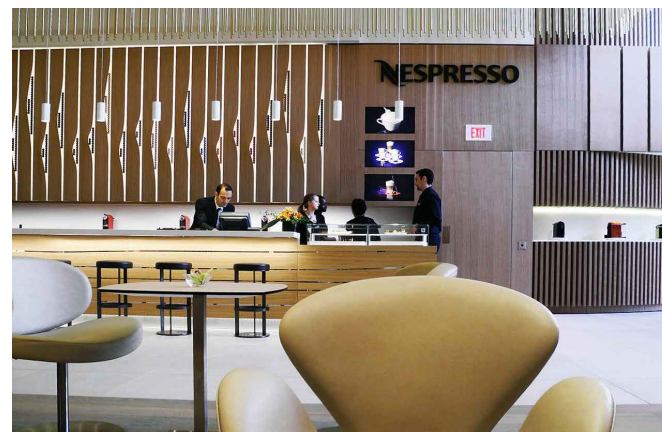
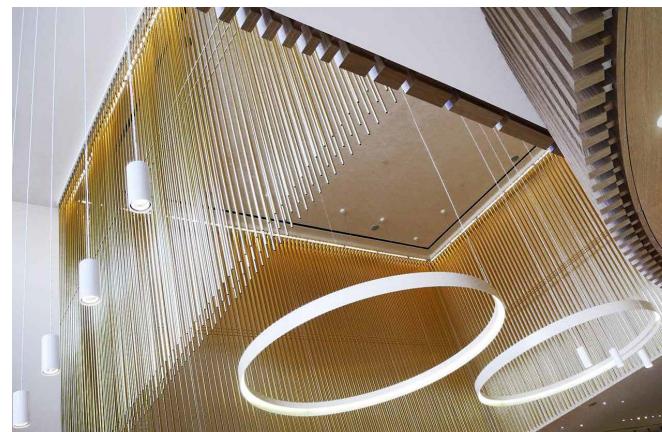




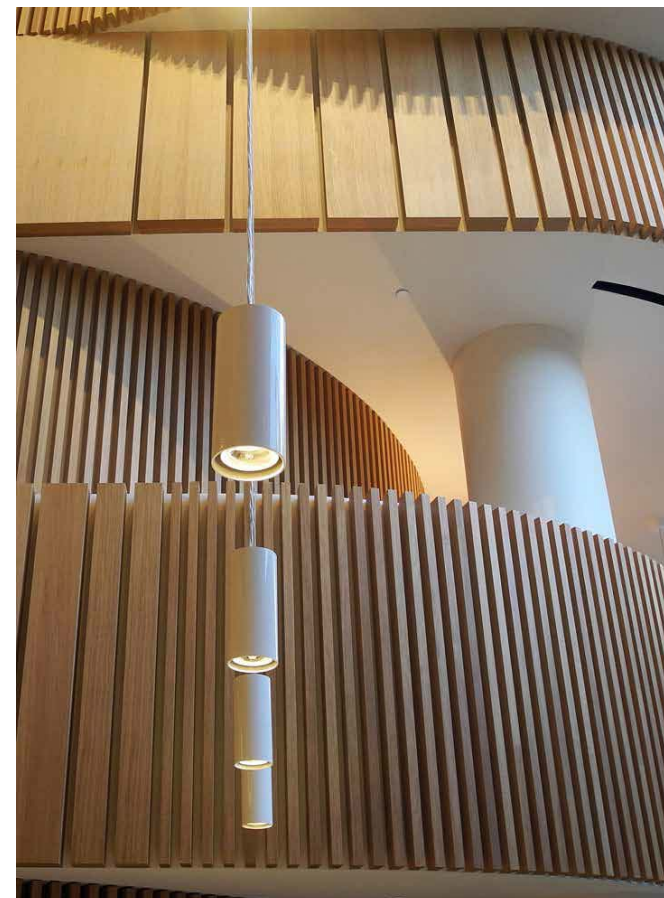




NESPRESSO | TORONTO



NESPRESSO | TORONTO





PROJECT

# GIORGIO ARMANI

DESIGN

Giorgio Armani Interiors

LOCATION

Cannes / Detroit / Doha / Hamburg  
Los Angeles / Manhasset / Roma  
(via Condotti) / Riyadh



quattro middle east



RESIDENTIAL



## PROJECT

DACIA

## DESIGN

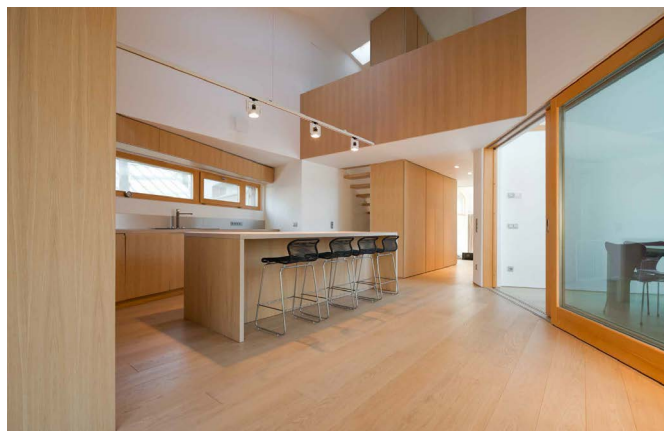
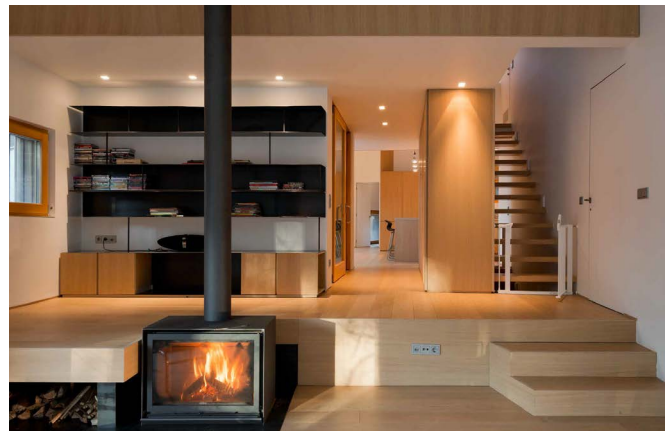
ZDA Zanetti Design Architettura

## LOCATION

SAN PIETROBURGO









PROJECT

DACIA

DESIGN

ZDA Zanetti Design Architettura

LOCATION

MOSCOW



DACIA | MOSCOW









PROJECT

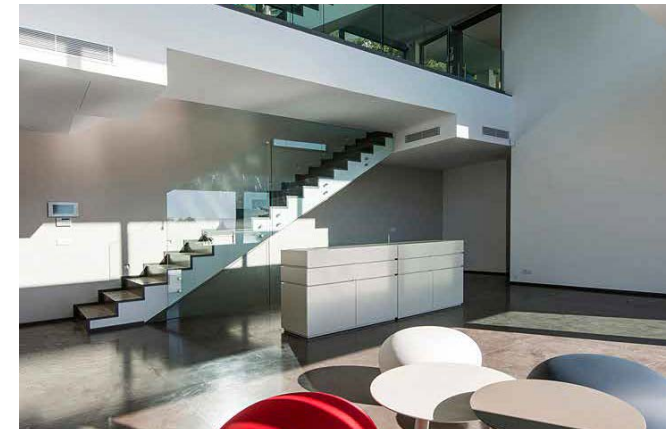
# VILLA KUHESTAN

DESIGN

Capelier Architecte et Associés

LOCATION

Cap d'Ail



PROJECT

# PRIVATE VILLA

DESIGN

LOCATION

CRACOVIA



quattro middle east



HOSPITALITY





PROJECT

# HOTEL SHERATON

DESIGN

Fabris & Partners

LOCATION

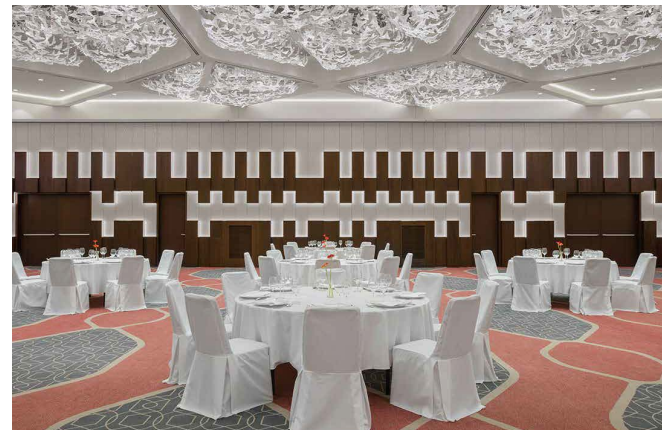
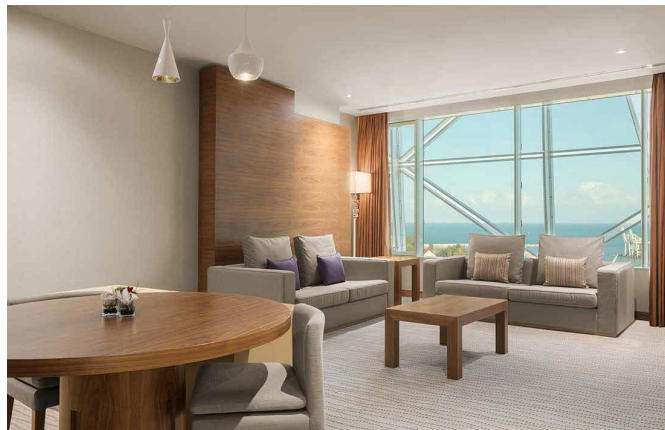
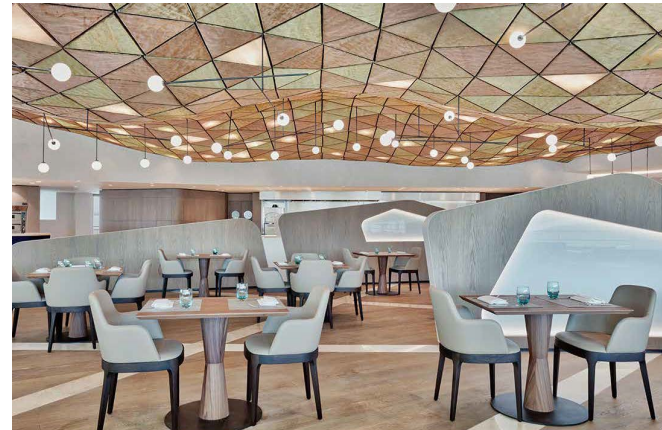
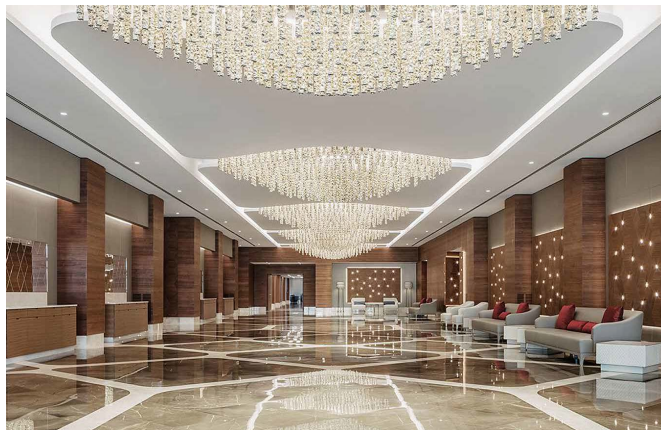
ANNABA - ALGERIA



HOTEL SHERATON | ANNABA - ALGERIA









PROJECT

# ALEPH HOTEL

DESIGN

LOCATION

ROMA



ALEPH HOTEL | ROMA







PROJECT

# CONSTANTINE MARRIOTT HOTEL

DESIGN

Studio Fabbris & Partners

LOCATION

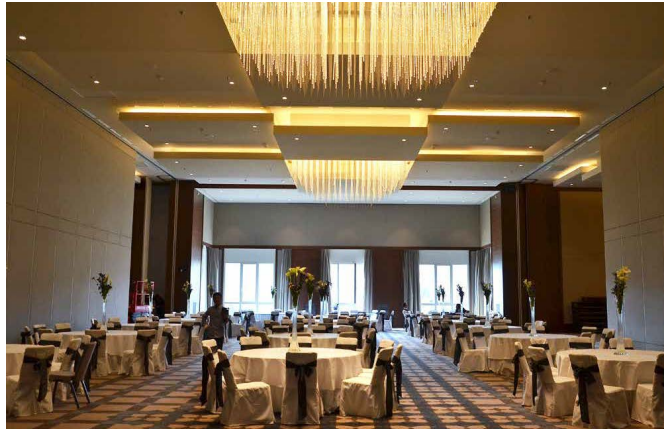
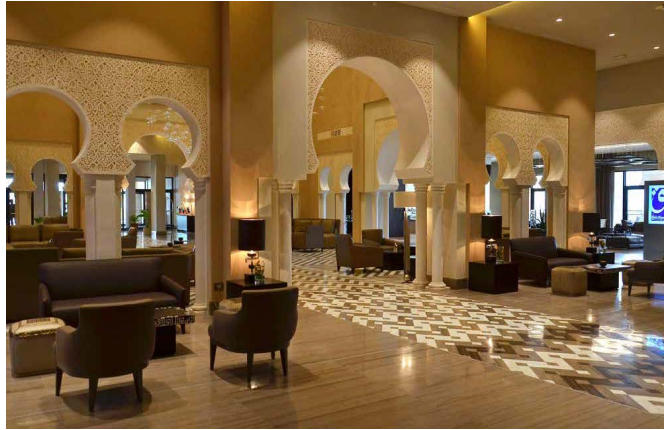
CONSTANTINE - ALGERIA



CONSTANTINE MARRIOTT HOTEL | CONSTANTINE - ALGERIA









PROJECT

# HOTEL HUGO

DESIGN

Marcello Pozzi

LOCATION

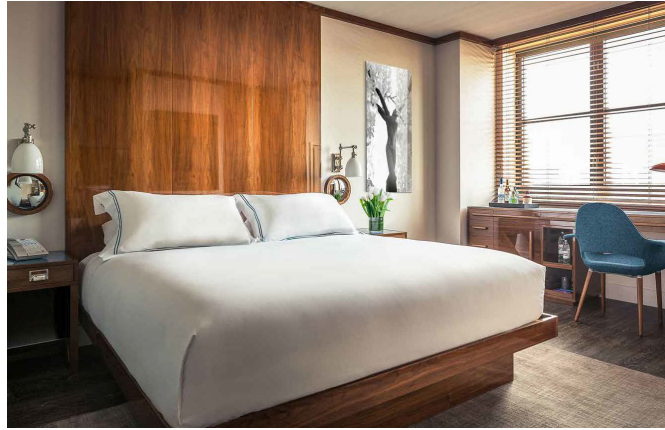
NEW YORK CITY



HOTEL HUGO | NEW YORK CITY









PROJECT

# LAGARE HOTEL

DESIGN

Andrea Auletta

LOCATION

MURANO - VENEZIA



LAGARE HOTEL | MURANO - VENEZIA







quattro middle east



# GENERAL CONTRACTOR

CIVIL WORKS & FIT-OUT





PROJECT

# PENTHOUSE

DIMENSIONS

800 m<sup>2</sup>

LOCATION

LONDRA



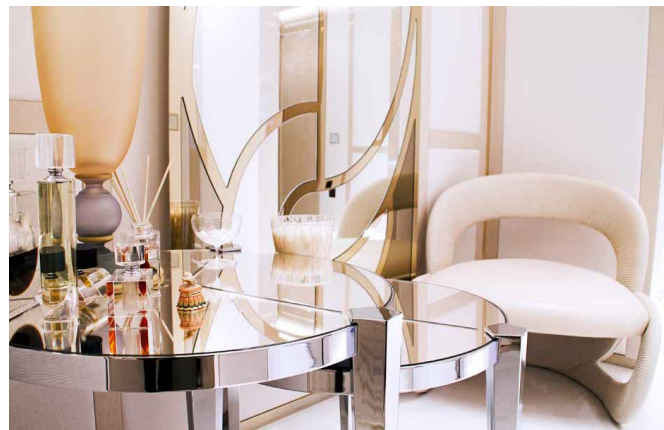
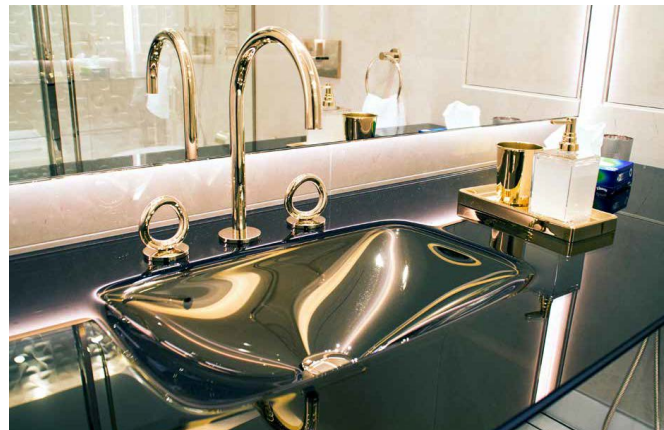
PENTHOUSE | LONDRA











PROJECT

INOX TECH

DIMENSIONS

1000 m<sup>2</sup>

LOCATION

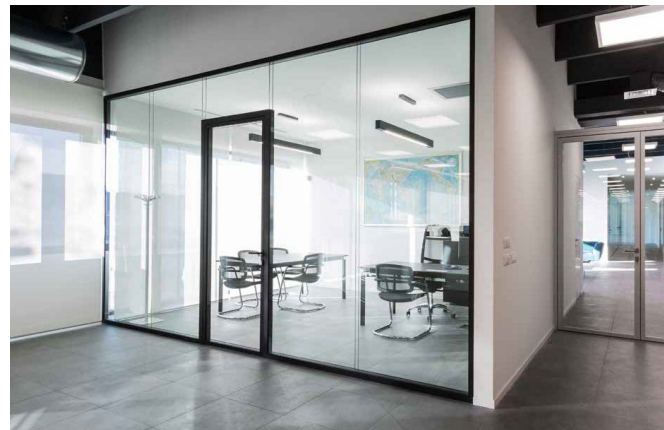
LENDINARA



INOX TECH | LENDINARA







PROJECT

# HOTEL SHERATON

DESIGN

Fabris & Partners

LOCATION

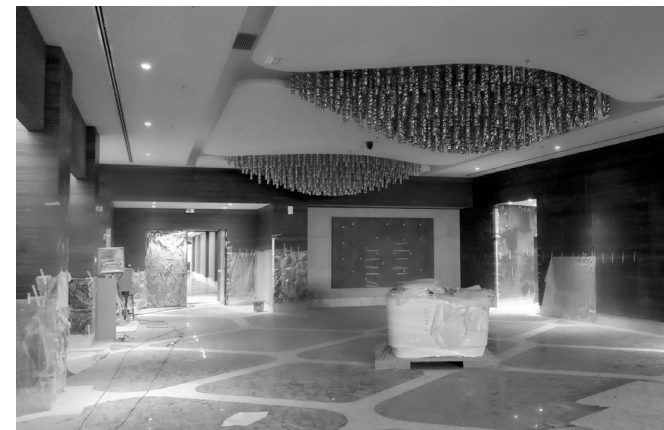
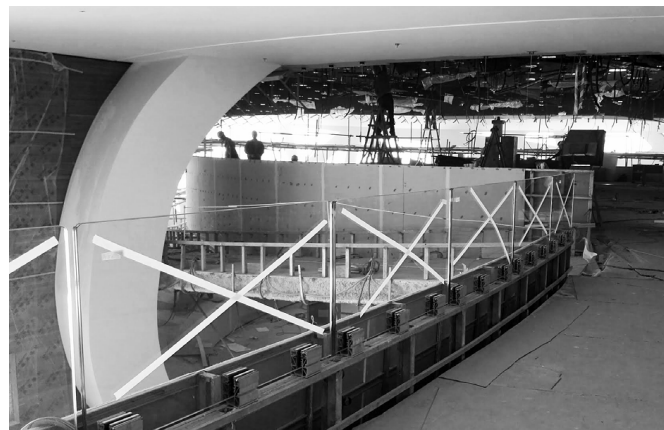
ANNABA - ALGERIA



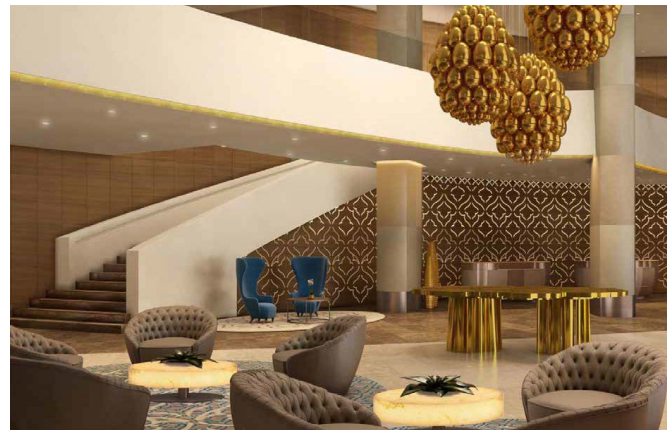
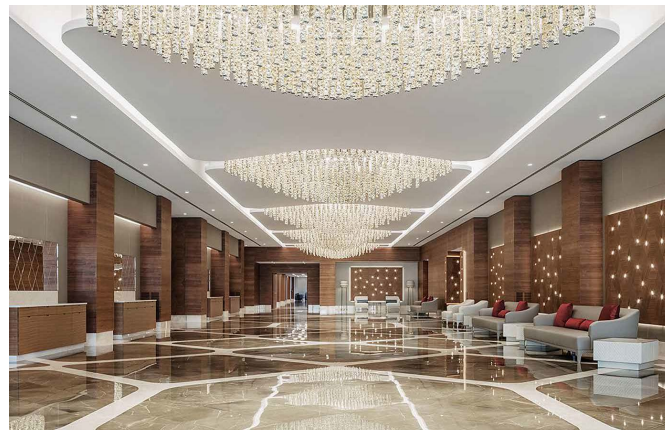
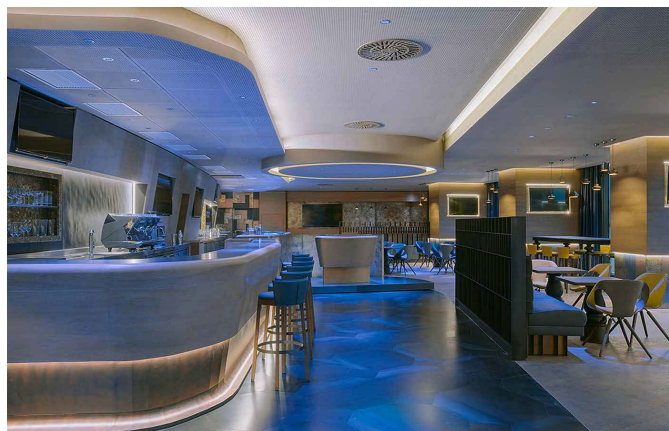
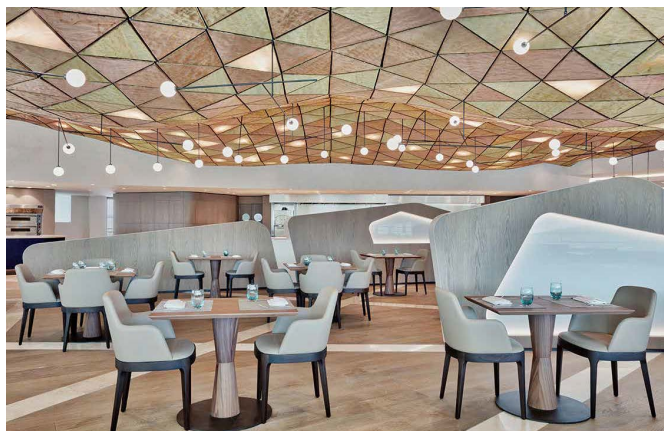
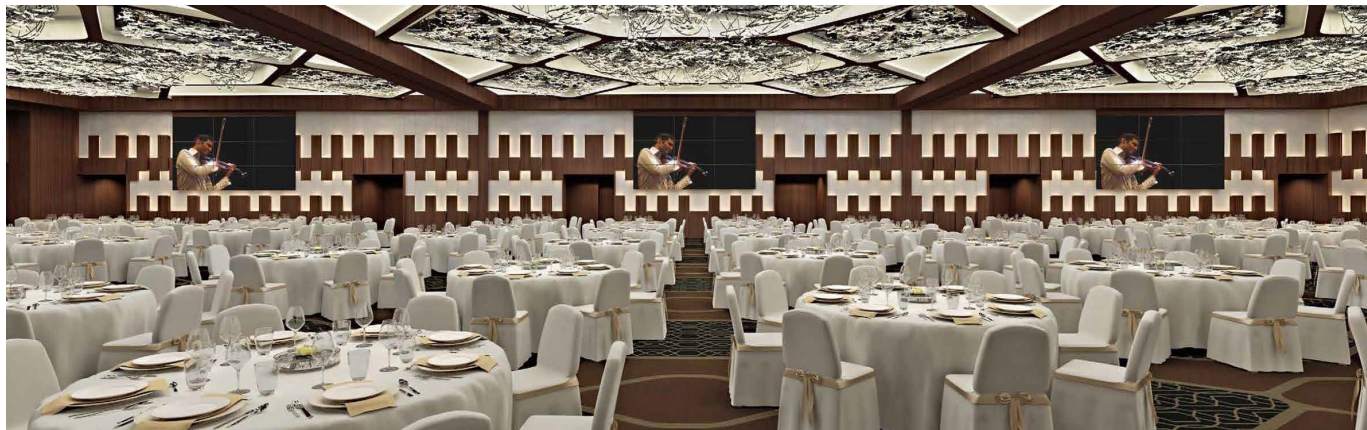
HOTEL SHERATON | ANNABA - ALGERIA













PROJECT

# THE INNOVATION CURVE [ WORK IN PROGRESS ]

DESIGN

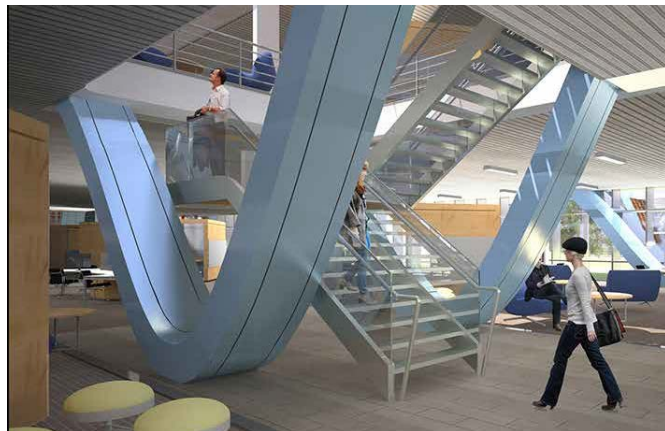
Form4 Architecture

LOCATION

SAN FRANCISCO



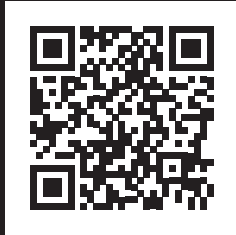






## FOR MORE PROJECTS

[www.quattro-me.ae/projects](http://www.quattro-me.ae/projects)



P.O.Box 126, Abu Dhabi. United Arab Emirates  
T +971-2-6222211 E info@quattrome.ae  
F +971-2-6222270 W www.quattrome.ae



A MEMBER OF MOHAMMED RASOOL KHOORY & SONS  
GROUP OF COMPANIES

